



FULL HD IP PTZ CAMERA

1080P/180M IR RANGE/ONVIF



Main Feature

- Megapixel progressive scan CMOS image sensor
- Adopting Hisilicon/Mstar High-performance SoC
- 25/30fps@1920x1080 or 20fps@1920x1080
- Digital Wide dynamic range (DWDR)
- Built-in removable IR-CUT filter
- Equipped with powerful zoom lens 4.7mm - 94mm
- Aperture F3.5 - F1.6
- Supports 20x optical zoom
- Horizontal field of view (FoV) 54.8°- 3.4°
- Manual, Automatic zoom with fast focus
- Pan rotation, manually 0.1° - 140°/S, automatically 360°/S
- Tilt rotation, manually 0.1° - 70°/S, automatically 80°/S
- Continuous 360° pan rotation, 180° tilt rotation
- 4 pattern scan, 256 presets, 4 group cruise
- 3D positioning, anti-fog

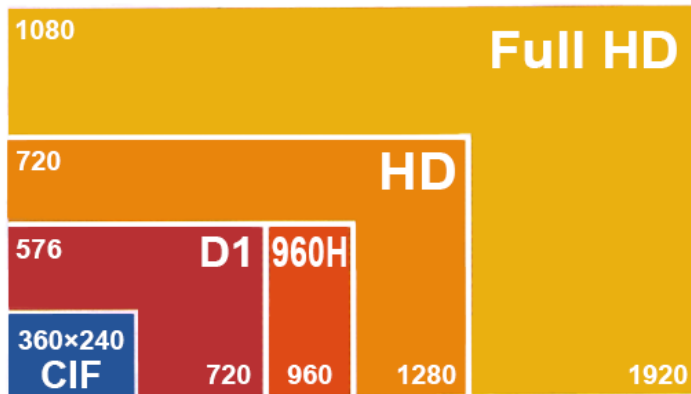


www.unifore.net

2MP/1080P FULL HD RESOLUTION



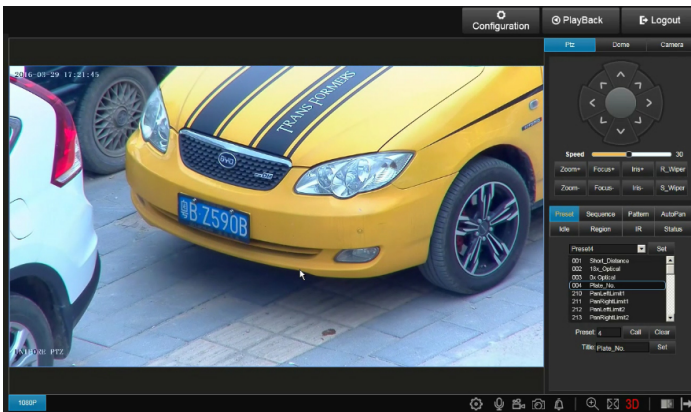
Utilizing megapixel CMOS image sensor to capture 1080p video to provide high detail images and survey a large area. The camera comes with 2D+3D DNR, WDR, BLC, HLC etc image processing technology to enhance image quality.



3D INTELLIGENT POSITIONING



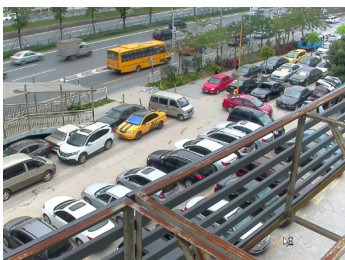
This smart PTZ camera supports 3D intelligent positioning, A easy-to-use function enabling users to track and zoom in any suspected objects by simply drag-and-click mouse.



20X OPTICAL 12X DIGITAL ZOOM



Being equipped with 20x optical zoom 4.7 - 94mm lens. Effective optical zoom features allow camera captures images from short to far distance, or enlarge the images with details. Including 12x digital zoom to further magnify image.



360°/SEC HIGH-SPEED PAN&TILT



The high-Speed pan at 360°/sec, with 360° continuous rotation and 180° tilting range, Unifore speed dome supports the user's demands in any requests



PRESETS/TORS/PATTERNS



With its various options such as presets, scan, patterns, and auto-panning, this camera can be programmed to scan wide area, and not to miss a single detail.



UP TO 180M NIGHT VISION



With the high-performance IR LED attached, this system excels in low-light environments, allowing objects to be distinguished even in darkness using infrared rays.



www.unifore.net

HD OUTDOOR PTZ IP CAMERA



Model	DM-R7E3220V	DM-R7E3220D
Image		
Image Sensor	OV2730 CMOS	MN34227 CMOS
Effective Pixels	2 Megapixel	2 Megapixel
Resolution	1080p	1080P
Video Standard	Hi3518EV200 1920*1080 (20fps)	Hi3516D 1920*1080 (25/30fps)
Min. illumination	0.03Lux @ F1.6 0 Lux @ IR ON	0.01Lux @ F1.6 0Lux @ IR ON
Gain Control	0-255 adjustable	
Video Standard	H.264/AVC	H.264/AVC
S/N Ratio	> 50dB	
White Balance	Auto/Indoor/Outdoor/Manual/ATW	
DNR	Off/Low/Middle/High	
Shutter Time	1/12.5 - 1/10000 S	
Lens		
Focal Length	4.7-94mm	
Optical Zooming	20x	
Lens Aperture	F1.6 - F3.5	
Lens Angle	54.8°~3.4°	
Network		
Video Compression	H.264/AVC	
Audio Compression	AMR, G.711	
Max. Frame Rate	25/30fps	
Codec Stream Type	1920*1080, 1280*720, 720*576	1920*1080, 720*576, 352*288, 176*144
Video Bitrate	16Kbps~8Mbps	
Network Interface	RJ-45 10/100M network self-adaptive	
Network Protocol	RTSP/RTP/RTCP/HTTP/HTTPS/FTP/DHCP/MUDP/SMTP/CIFS/UPNP/PPPOE/NTP/DDNS	
Motion Detection	Sensitivity:1~100 adjustable, linkage alarm can be set	
Video Loss	Sensitivity:1~100 adjustable, linkage alarm can be set	
Compliant	ONVIF 2.4 (Profile S)	
PTZ		
Manual Pan	0.1°~140°/S;Max: 115 °~160°/S adjustable, Max. preset speed:360°/S.	
Manual Tilt	0.1°~120°/S;Max. preset speed:300°/S.	
Auto Flip	Support	
Left &Right Scan	4 Groups	
Pattern	4 Groups	
Preset Position	256	
Patrol Cruise	4 Groups (1-24 presets per each)	
3D Position	Support	
Defog	Built-in defog device	
IR Performance		
IR Distance	>120M (max. 180M)	
Power Supply	DC12V±10%(3A)	
Max. Consumption	18W	
Working Condition	Temperature:-30°~60□°;humidity:≤95% with out condensation	
Ingress Rate	IP66	



www.unifore.net