



PHOTOELECTRIC BEAM DETECTOR

“ANTI-CRAWL” HIGH SECURITY PHOTOBEAM
MODEL: VG-2T30, VG-2T60, VG-2T100

**SOLAR POWERED
WIRELESS BEAM SENSOR**

BEST FOR OUTDOOR PERIMETER SECURITY



Built-in Rechargeable
Lithium-ion Battery



Anti-Interference
Environment Adaptive



IP65 Weatherproof
Fully-Sealed



Withstand High
Temperature



Long Range
Wireless Transmission



Photoelectric beams are well suited for substations, oil/gas facilities, transportation, correctional facilities, storage, impound yards, critical infrastructures, industrial complexes, solar fields.



Completely Wireless Perimeter Security System requiring no trenching or wiring

Wi-Fi Connection
to your ADSL Box



SIM Card
Text message + Voice Plan



The data passes through
Servers



SMS

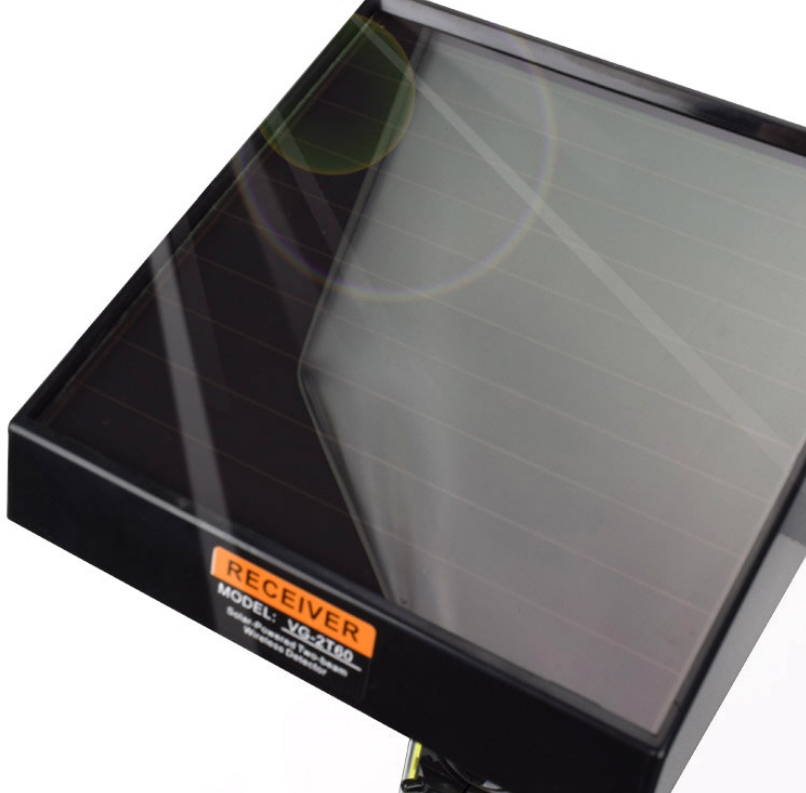


Compatible with 433MHz Alarm Panels Can Call Your Mobile Number
and Send SMS, Instant Push Notification as well.

FULLY-SEALED DESIGN

Withstand Dust, Rain, Wind, Snow, Frost, Dew



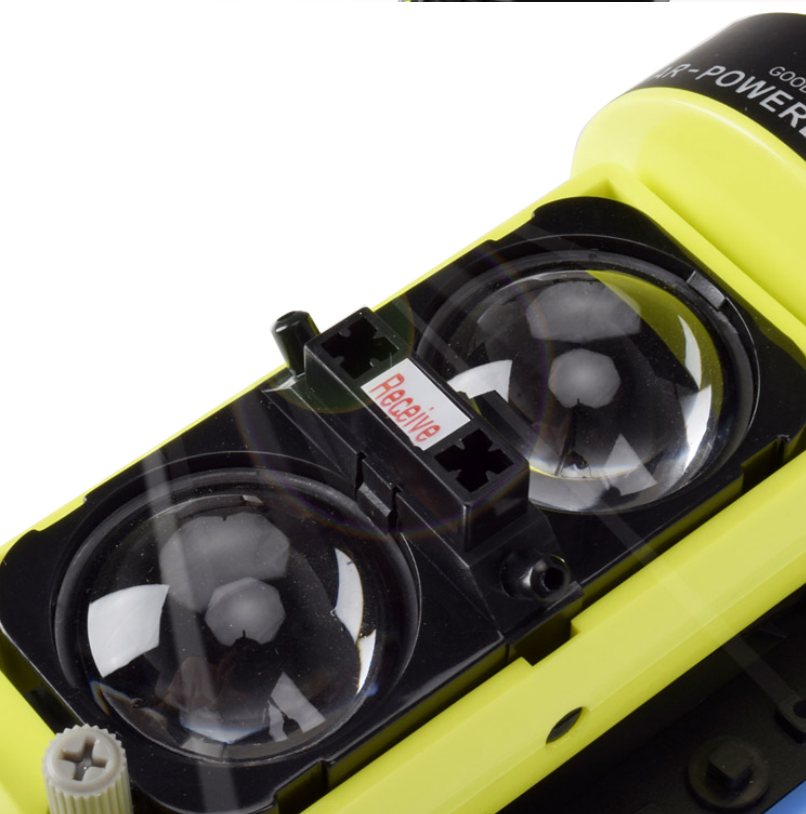


SOLAR PANEL POWERED

Solar panel supply power to the detectors, detectors have rechargeable high-efficient LiFePO4 battery with average lifespan 7~8 years. 2 days direct sun light can make detector work last up to 30 days when encountering cloudy/ raining days.

Using solar energy, the product is maintenance-free, and it consumes zero electricity, you make contribution to environment protection.

Solar powered + built-in RF module, the detector allows you to setup a completely wire-free perimeter alarm system.

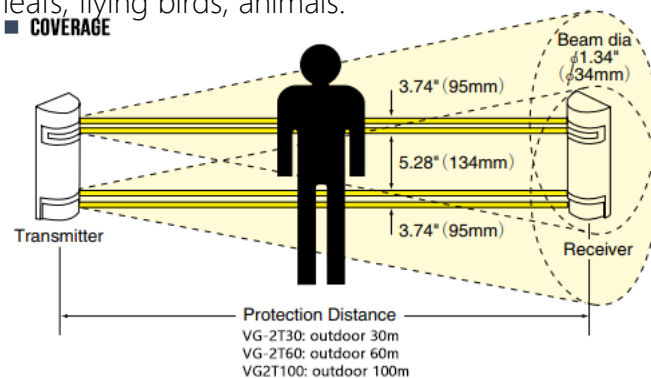


SPHERICAL OPTICAL LENS

Utilizing spherical coated optical lens to ensure focus of infrared ray help it travel a long range distance up to 100 meters.

By employing military grade Infrared LED and dual-beam Infrared technology, the product can provide you reliable performance, also minize false alarm deriving from moving tree branches, leafs, flying birds, animals.

■ COVERAGE



EASY ALIGNMENT

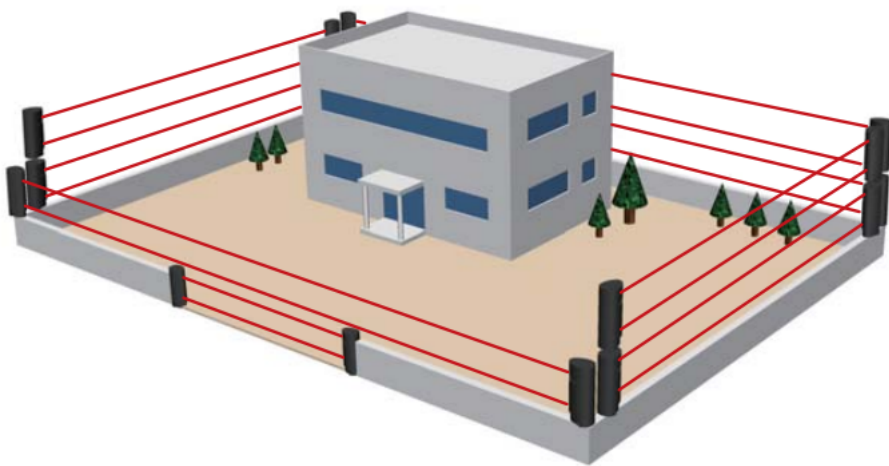
Optical component supports 180 degree horizontally, 20 degree vertically adjustable, the design enables product to obtain ideal angle under various installation conditions. Moreover, it has IR signal LED indicator to let you align product easily.

Both receiver and transmitter have tamper-protection design, vandalism or physical damage will set off the alarm.

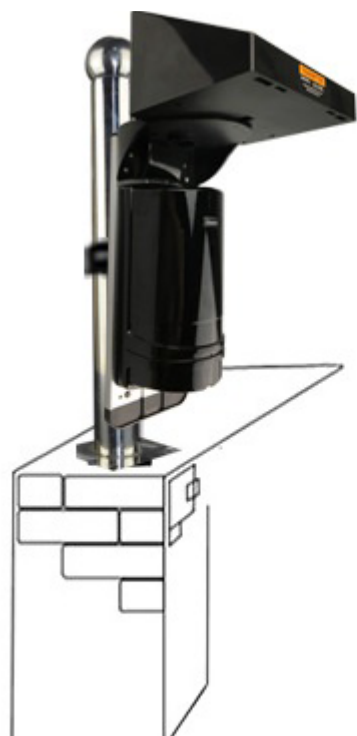
Hardwired terminals, it also can be connected to hardwired security system e.g. intrusion alarm panel, access control, video surveillance system.

[INSTALLATION EXAMPLE]

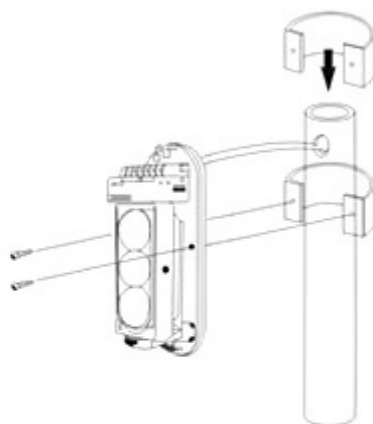
Photoelectric beam perimeter protection offers the most reliable and cost effective method of protecting critical infrastructure and valuable property.



FLEXIBLE INSTALLATION



Wall

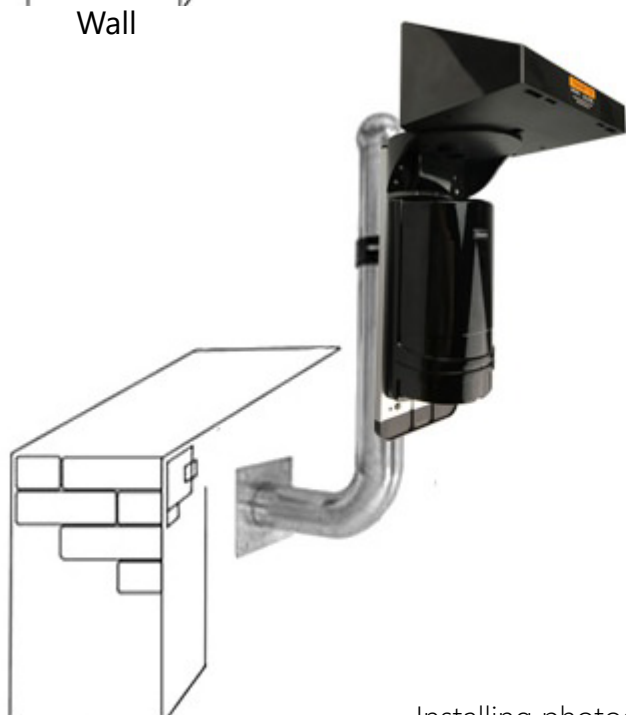


Fix detector on pole with provided bracket

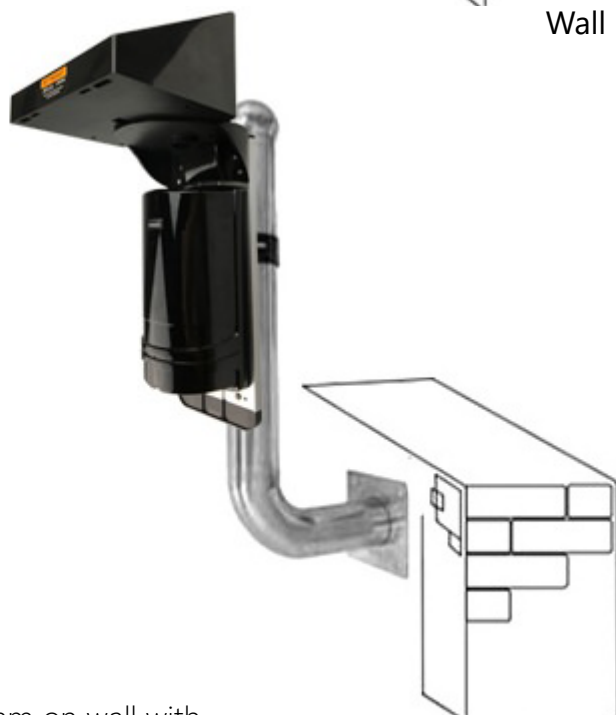


Wall

Installing photoelectric beam on wall with optional accessories - "I" stainless steel pole



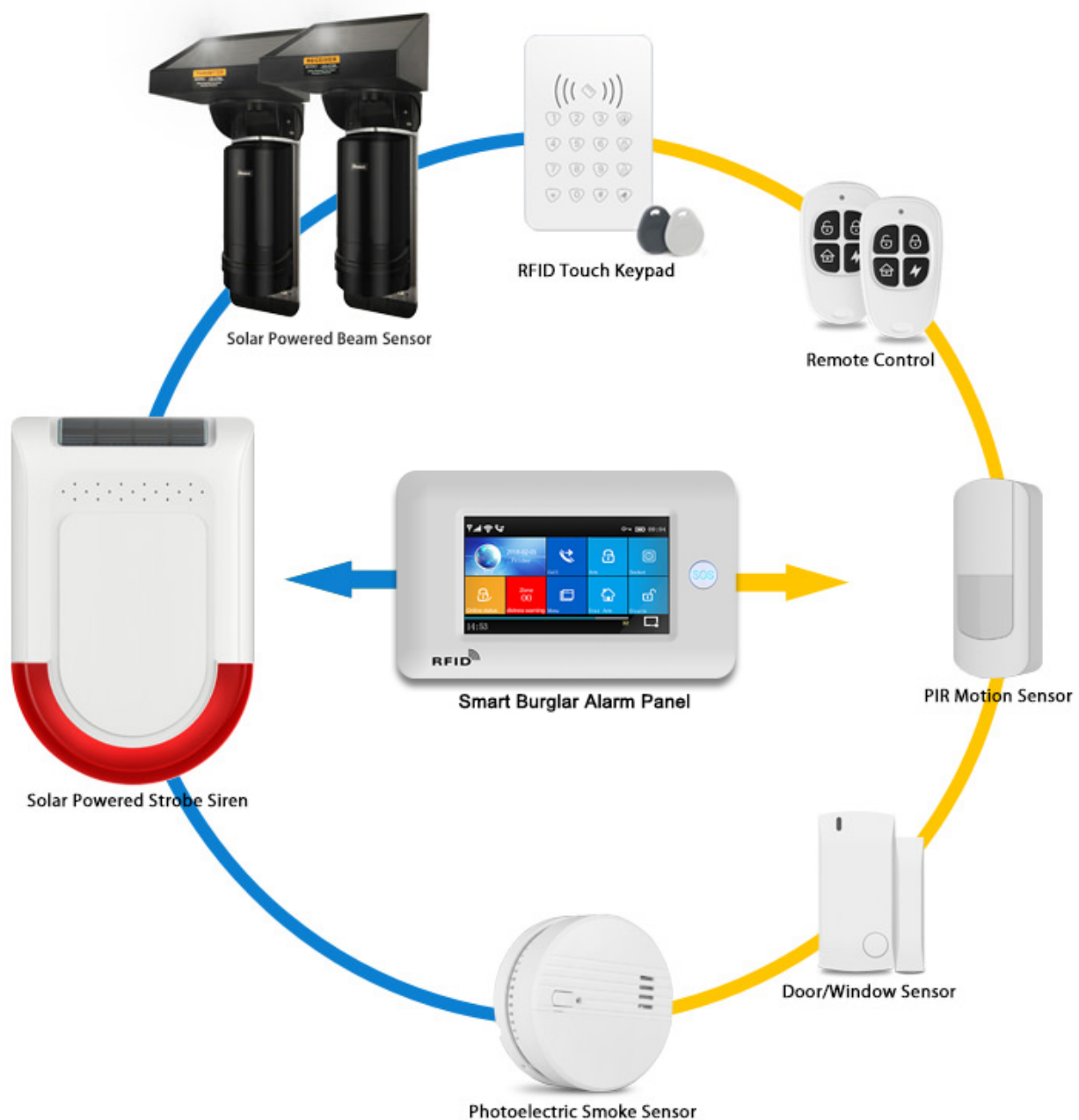
Wall



Wall

Installing photoelectric beam on wall with optional accessories - "L" stainless steel pole

SYSTEM EXAMPBLE



SPECIFICATION

Model	VG-2T30	VG-2T60	VG-2T100
Number of Beams	Dual (2)	Dual (2)	Dual (2)
Detection Range	30 meters	60 meters	100 meters
Infrared wavelength	940nm		
Light Sources	Digital Filter Type		
Sensor Speed	100ms		
Power supply	DC 3.2V (Lithium iron phosphate Battery)		
External Rechargeable Power	DC12V 500 - 1000mA		
Static current	Transmitter≤0.5mA, Receiver≤0.3mA		
Max. trigger times	<=50 in 24 hours		
Solar panel output	1800Lux≥0.2mA (note: outdoor cloudy day sun light = 2000Lux)		
Alarm Output	Relay Output Contact Rating: AC DC 30V 0.5A Max		
Wireless Frequency	433MHz AM		
Battery Capacity	Transmitter 500mAH; Receiver 1000mAH		
Using Temperature	-25 Celsius degree - 65 Celsius degree		
Dismantle Prevention Output	Relay Output Contact Rating: AC DC 30V 0.5A Max		
Adjusting Angle of Optical Axis (Horizontal)	180°±90°		
Adjusting Angle of Optical Axis (Vertical)	20°±10°		
Hairline Pointer	Window Type		
Connection	M3 Connection Assistenace, Spiral Terminal		
Dedew and Defrost method	Built-in heater (made to order)		
Other Function	Induction Testing Output Terminal		
Warranty	12 months factory warranty		
Material	PC engineering plastic/Resin		
Weight	2KG		